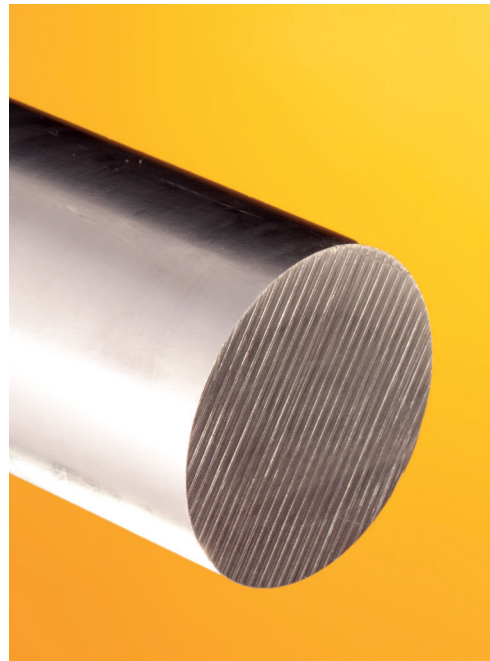
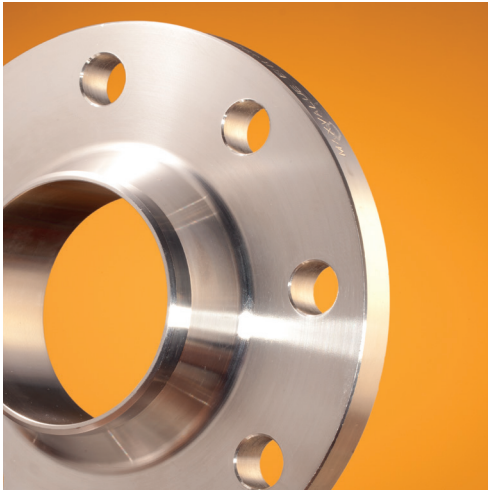




STAPPERT

INOX INTELLIGENCE.



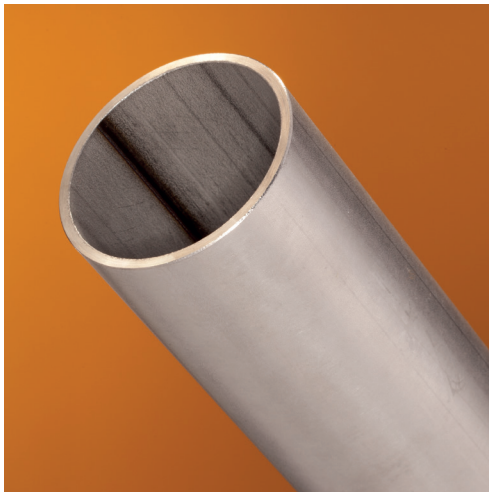
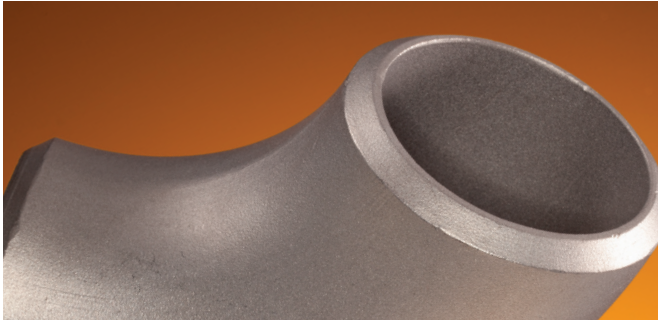
QUALITY EX STOCK

Summary of
available products



Bars
Angles
Special sections
Plates and sheets
Pipes and tubes
Fittings
Hollow bars





*»Use our strengths
and talk to our
stainless steel experts.«*

STAPPERT – THE BRAND FOR STAINLESS STEELS.

STAPPERT is one of the leading distributors of long products and fittings made of stainless, highly corrosion and heat resistant steel.

We have the stainless steel that fits your requirements perfectly and supply it in a range of standard and tailor-made solutions that is unique in stainless steel business. Furthermore you can expect first-class service from us in every respect.

Tailored to provide you the greatest possible benefit from start to finish: in addition to the enormous variety of products and reliable delivery – for which the name STAPPERT stands for – you can also rely on our ongoing commitment to progress, development and the further optimization of our services. This is what we mean by INOX INTELLIGENCE.

We – the STAPPERT team – see ourselves as competent contact persons for the interests of different branches of industry. From mechanical engineering to energy and environmental technology to the food industry, we are at home in all sectors and have built up our reputation as a competent partner over decades.

STAPPERT's emphasis is not only on a wide range of stainless, highly corrosion and heat resistant steels, but also on good accessibility and location-independent support. We are always on hand, wherever you are. Your reliable global partner with comprehensive coverage of your needs and short delivery times.

TUBES AND PIPES | SEAMLESS

grade	AISI/ UNS*)	seamless	hydraulic tubes	precision tubes
		○	○	○
1.4301 1.4307	304 304L	4.00 × 1.00 - 406.40 × 9.53	6.00 × 1.00 - 42.00 × 2.00	6.00 × 1.00 - 42.00 × 3.00
1.4306	304 L	12.00 × 1.00 - 323.85 × 12.70	-	-
1.4401 1.4404	316 316L	6.00 × 1.00 - 406.40 × 9.53	-	6.00 × 1.00 - 38.00 × 2.00
1.4462	S 31803	13.72 × 2.24 - 219.08 × 8.18	-	-
1.4501	S 32760	21.34 × 2.77 - 168.33 × 7.11	-	-
1.4539	904 L	10.30 × 2.00 - 219.08 × 12.70	-	-
1.4541	321	6.00 × 1.00 - 219.08 × 12.70	6.00 × 1.00 - 28.00 × 2.00	6.00 × 1.00 - 57.00 × 2.90
1.4571	316 Ti	4.00 × 0.50 - 323.85 × 12.70	6.00 × 1.00 - 42.00 × 2.00	6.00 × 1.00 - 88.90 × 4.50
1.4841	314	6.00 × 1.00 - 168.30 × 4.50	-	-
1.4845	310 S	13.72 × 2.24 - 219.08 × 12.70	-	-
1.4878	321 H	6.00 × 1.00 - 219.08 × 12.70	-	-

TUBES AND PIPES | WELDED

grade	AISI/ UNS*)	not annealed	annealed	annealed polished	dairy tubes
		○	○	○	○
1.4301 1.4307	304 304L	5.00 × 0.75 - 812.80 × 4.00	6.00 × 1.00 - 609.60 × 9.53	21.30 × 2.00 - 114.30 × 2.00	18.00 × 1.00 - 204.00 × 2.00
1.4404	316 L	6.00 × 1.00 - 812.80 × 4.00	6.00 × 1.00 - 609.60 × 9.53	21.30 × 2.00 - 114.30 × 2.00	18.00 × 1.00 - 154.00 × 2.00
1.4539	904 L	76.10 × 3.00 - 355.60 × 4.00	-	-	-
1.4541	321	21.30 × 2.00 - 406.40 × 4.00	6.00 × 1.00 - 114.30 × 5.00	-	-
1.4571	316 Ti	10.00 × 1.00 - 609.60 × 4.00	6.00 × 1.00 - 114.30 × 6.30	-	-

CONSTRUCTION TUBES

grade	AISI/ UNS*)	round	round polished	round mirror polished	round brushed	square	square polished	square brushed	rectangular	rectangular polished	rectangular brushed
		○	○	○	○	□	□	□	□	□	□
1.4301	304	10.00 × 1.50 - 168.30 × 2.00	10.00 × 1.50 - 114.30 × 4.00	12.00 × 1.50 - 114.30 × 2.00	15.00 × 1.00 - 114.30 × 3.00	10 × 10 × 1.0 - 200 × 200 × 5.0	15 × 15 × 1.5 - 120 × 120 × 3.0	20 × 20 × 2.0 - 200 × 200 × 4.0	20 × 10 × 1.5 - 200 × 150 × 5.0	20 × 10 × 1.5 - 150 × 50 × 3.0	20 × 10 × 1.5 - 200 × 100 × 4.0
1.4404	316 L	-	25.00 × 2.00 - 48.30 × 2.00	-	-	15 × 15 × 1.5 - 200 × 200 × 5.0	-	20 × 20 × 2.0 - 100 × 100 × 3.0	30 × 20 × 2.0 - 200 × 100 × 6.0	-	30 × 20 × 2.0 - 120 × 60 × 2.0
1.4571	316 Ti	-	33.70 × 2.00 - 48.30 × 2.00	-	-	15 × 15 × 1.5 - 150 × 150 × 5.0	-	-	20 × 10 × 1.5 - 150 × 100 × 3.0	-	-

HOLLOW BARS

grade	AISI/ UNS*)	seamless
		●
1.4301 1.4307	304 304L	32 × 16 - 420 × 300
1.4306	304 L	32 × 16 - 250 × 200
1.4401 1.4404	316 316 L	32 × 16 - 420 × 300
1.4462	S 31803	50 × 25 - 250 × 200
1.4541	321	32 × 20 - 250 × 200
1.4571	316 Ti	32 × 16 - 250 × 200
1.4878	321 H	32 × 20 - 250 × 200



BARS | COLD-FORMED

grade	AISI/ UNS*)	DIN EN	DIN EN	DIN EN	polished	DIN EN	DIN EN	DIN EN	equal	key steel	key steel
		10278 h9	10278 h8	10278 h6		10278	10278	10278			
1.4021	420	4 - 100	-	-	-	-	-	-	-	-	-
1.4034	420	5 - 90	-	-	-	-	-	-	-	-	-
1.4057	431	5 - 100	-	-	-	-	11 - 41	-	-	-	-
1.4104	430 F	3 - 100	-	-	-	6 - 60	5 - 60	-	-	-	-
1.4112	440 B	5 - 80	-	-	-	-	-	-	-	-	-
1.4122		5 - 100	-	-	-	-	-	-	-	-	-
1.4301	304	2 - 100	6 - 60	10 - 50	8 - 20	4 - 100	7 - 65	8 x 4 - 160 x 10	-	10 x 10 x 2 - 60 x 60 x 6	-
1.4307	304L										
1.4301 Ugima	304 Ugima	8 - 90	-	-	-	-	27 - 41	-	-	-	-
1.4305	303	2 - 100	10 - 30	-	8 - 20	5 - 100	5 - 60	20 x 5 - 120 x 20	-	-	-
1.4305 Ugima	303 Ugima	6 - 90	-	-	-	-	-	-	-	-	-
1.4401	316	3 - 100	-	-	-	10 - 60	7 - 60	15 x 3 - 100 x 20	10 x 3,5 - 50 x 25	-	-
1.4404	316L										
1.4404 Ugima	316 L Ugima	8 - 60	-	-	-	-	-	-	-	-	-
1.4418		12 - 22	-	-	-	-	-	-	-	-	-
1.4435	316 L	-	-	-	-	-	13 - 41	-	-	-	-
1.4435 Ugima	316 L Ugima	4 - 80	-	-	-	-	-	-	-	-	-
1.4460	S 32900	16 - 80	-	-	-	-	-	-	-	-	-
1.4462	S 31803	6 - 80	-	-	-	-	-	-	-	-	-
1.4539	904 L		-	-	-	-	19 - 36	-	-	-	-
1.4541	321	3 - 100	-	-	-	-	13 - 65	-	-	-	-
1.4542	630	10 - 40	-	-	-	-	-	-	-	-	-
1.4571	316 Ti	2 - 100	-	-	-	4 - 100	6 - 70	10 x 3 - 120 x 10	-	-	5 x 3 - 45 x 25
1.4571 Ugima	316 Ti Ugima	8 - 60	-	-	-	-	22 - 55	-	-	-	-
1.4841	314	3 - 5	-	-	-	-	13 - 36	-	-	-	-
1.4923		10 - 20	-	-	-	-	-	-	-	-	-

PLATES AND SHEETS

grade	AISI/ UNS*)	small format	medium format	large format	super format
		(1,000 x 2,000 mm)	(1,250 x 2,500 mm)	(1,500 x 3,000 mm)	(2,000 x 6,000 mm)
1.4016	430	0.8 - 2.0 thickness	0.6 - 2.0 thickness	0.8 - 2.0 thickness	-
1.4301	304	0.5 - 40.0 thickness	0.6 - 20.0 thickness	0.8 - 30.0 thickness	6.0 - 8.0 thickness
1.4307	304L				
1.4401	316	0.7 - 20.0 thickness	1.0 - 5.0 thickness	1.0 - 25.0 thickness	-
1.4404	316L				
1.4462	S 31803	1.0 - 6.0 thickness	-	1.0 - 15.0 thickness	-
1.4539	904 L	1.0 - 8.0 thickness	-	1.0 - 8.0 thickness	-
1.4541	321	0.5 - 15.0 thickness	2.0 - 6.0 thickness	2.0 - 8.0 thickness	-
1.4571	316 Ti	1.0 - 5.0 thickness	1.5 - 4.0 thickness	1.0 - 4.0 thickness	-
1.4746		2.0 - 20.0 thickness	-	-	-
1.4828	309	0.8 - 12.0 thickness	2.0 - 10.0 thickness	1.0 - 15.0 thickness	-
1.4841	314	1.0 - 12.0 thickness	1.5 - 10.0 thickness	2.0 - 10.0 thickness	-
1.4845	310 S	1.0 - 10.0 thickness	-	2.0 - 10.0 thickness	-



FLANGES

grade	1.4301/1.4307	1.4401/1.4404	1.4462
AISI/UNS*)	304/304 L	316/316 L	S 31803
Welding neck flanges according to EN	PN 06: DN 15/21.3 - DN 600/609.6 PN 10: DN 200/204 - DN 800/812.8 PN 16: DN 50/54 - DN 600/609.6 PN 25: DN 200/219.1 - DN 600/609.9 PN 40: DN 10/17.2 - DN 300/323.9	PN 06: DN 15/21.3 - DN 600/609.6 PN 10: DN 200/204 - DN 800/812.8 PN 16: DN 50/54 - DN 600/609.6 PN 25: DN 200/219.1 - DN 600/609.9 PN 40: DN 10/17.2 - DN 300/323.9	PN 16: DN 50/60.3 - DN 200/219.1 PN 40: DN 15/21.34 - DN 40/48.26
Welding neck flanges according to EN with reduced S-Maß	-	-	-
Welding neck flanges according to DIN	PN16: DN 15/21.3 - DN 32/42.4	-	-
Welding neck flanges according to ASTM	150#: 1/2" SCH10S - 24" SCH40S 300#: 1/2" SCH40S - 16" SCH80S 600#: 1/2" SCH80S - 10" SCH80S	150#: 1/2" SCH10S - 24" SCH40S 300#: 1/2" SCH40S - 16" SCH80S 600#: 1/2" SCH80S - 10" SCH80S	-
Flanges for automatic welding according to EN	-	-	-
Flanges for automatic welding according to DIN	-	-	-
BSP threaded flanges according to EN	PN 16: DN 50/60.3 - DN 100/114.3 PN 40: DN 10/17.2 - DN 40/48.3	PN 16: DN 50/60.3 - DN 100/114.3 PN 40: DN 10/17.2 - DN 40/48.3	-
Threaded flanges according to DIN	-	-	-
NPT threaded flanges according to ASTM	150#: 1/2"/21.3 - 2"/60.5 300#: 1/2"/21.3 - 2"/60.5	150#: 1/2"/21.3 - 3"/88.9 300#: 1/2"/21.3 - 2"/60.5	-
Slip-on flanges according to EN	PN 06: DN 15/21.3 - DN 600/609.6 PN 10: DN 200/204 - DN 800/812.8 PN 16: DN 50/50.8 - DN 400/406.4 PN 40: DN 10/17.2 - DN 40/48.3	PN 06: DN 15/21.3 - DN 600/609.6 PN 10: DN 200/204 - DN 800/812.8 PN 16: DN 50/50.8 - DN 400/406.4 PN 40: DN 10/17.2 - DN 40/48.3	-
Slip-on flanges according to DIN	-	-	-
Slip-on flanges according to DIN with reduced thickness	PN 10: DN 50/60.3 - DN 1000/1016	PN 10: DN 300/323.9 - DN 1000/1016	-
Slip-on flanges according to EN with reduced thickness	PN 10: DN 15/21.3 - DN 600/610	-	-
Slip-on flanges according to ASTM	150#: 1/2"/21.3 - 24"/609.6 300#: 1/2"/21.3 - 12"/323.9	150#: 1/2"/21.3 - 24"/609.6 300#: 1/2"/21.3 - 12"/323.9	-
Lap-joint flanges according to EN	PN 10: DN 200/204 - DN 800/812.8 PN 16: DN 50/50.8 - DN 200/219.1 PN 40: DN 10/17.2 - DN 40/48.3	PN 10: DN 200/204 - DN 800/812.8 PN 16: DN 50/50.8 - DN 200/219.1 PN 40: DN 10/17.2 - DN 200/219.1	-
Lap-joint flanges according to DIN	-	-	-
Lap-joint flanges according to DIN with reduced thickness	PN 10: DN 50/60.3 - DN 600/609.6	PN 10: DN 300/323.9 - DN 600/609.6	-
Lap-joint flanges according to EN with reduced thickness	PN 10: DN 15/21.3 - DN 600/609.6	-	-
Lap-joint flanges according to ASTM	150#: 1/2"/21.3 - 24"/609.6	150#: 1/2"/21.3 - 24"/609.6	-
Blind flanges according to EN	PN 06: DN 50 - DN 600 PN 10: DN 200 - DN 800 PN 16: DN 50 - DN 600 PN 40: DN 10 - DN 150	PN 06: DN 50 - DN 600 PN 10: DN 200 - DN 800 PN 16: DN 50 - DN 600 PN 40: DN 10 - DN 150	PN 16: DN 50 - DN 200 PN 40: DN 15 - DN 40
Blind flanges according to DIN	-	-	PN 16: DN 15 - DN 40
Blind flanges according to DIN with reduced thickness	PN 10: DN 200 - DN 600 PN 16: DN 100 - DN 150	PN 10: DN 300 - DN 600	-
Blind flanges according to EN with reduced thickness	PN 10: DN 15 - DN 500	-	-
Blind flanges according to ASTM	150#: 1/2"/21.3 - 24"/609.6 300#: 1/2"/21.3 - 16"/406.4 600#: 1/2"/21.3 - 8"/219.2	150#: 1/2"/21.3 - 24"/609.6 300#: 1/2"/21.3 - 16"/406.4 600#: 1/2"/21.3 - 8"/219.2	-
Socket-weld flanges according to ASTM	-	150#: 1/2"/21.3 - 4"/114.3	-
Pressed flanges	PN 10: DN 15 - DN 300	PN 10: DN 15 - DN 300	-

FLANGES

grade	1.4539	1.4541	1.4571	Aluminium
AISI/UNS*)	904 L	321	316 Ti	
Welding neck flanges according to EN	PN 16: DN 50/60.3 - DN 200/219.1 PN 40: DN 15/21.34 - DN 40/48.26	PN 10: DN 200/219.1 - DN 400/406.4 PN 16: DN 50/60.3 - DN 400/406.4 PN 40: DN 15/21.3 - DN 80/88.9	PN 10: DN 200/204 - DN 600/609.6 PN 16: DN 50/54 - DN 500/508.0 PN 40: DN 10/17.2 - DN 200/219.1	-
Welding neck flanges according to EN with reduced S-Maß	-	-	PN10: DN 200/219.1 - DN 250/273.0	-
Welding neck flanges according to DIN	-	PN16: DN 10/17.2 - DN 40/48.3	PN16: DN 10/17.2 - DN 150/159.0	-
Welding neck flanges according to ASTM	-	-	-	-
Flanges for automatic welding according to EN	-	-	PN16: DN 15/21.3 - DN 200/219.1 PN40: DN 15/21.3 - DN 150/168.3	-
Flanges for automatic welding according to DIN	-	-	PN16: DN 15/21.3 - DN 50/60.3	-
BSP threaded flanges according to EN	-	-	PN 16: DN 50/60.3 - DN 80/88.9 PN 40: DN 10/17.2 - DN 40/48.3	-
Threaded flanges according to DIN	-	-	PN 10: DN 15/21.3 - DN 100/114.3 PN 16: DN 15/21.3 - DN 100/114.3	-
NPT threaded flanges according to ASTM	-	-	-	-
Slip-on flanges according to EN	-	PN 10: DN 250/273 - DN 500/508 PN 16: DN 80/88.9 - DN 125/139.7	PN 10: DN 200/206 - DN 500/508 PN 16: DN 50/54 - DN 300/323.9 PN 40: DN 15/21.3 - DN 40/48.3	-
Slip-on flanges according to DIN	-	PN 10: DN 15/21.3 - DN 200/219.1	PN 10: DN 15/21.3 - DN 200/219.1	-
Slip-on flanges according to DIN with reduced thickness	-	-	PN 10: DN 50/60.3 - DN 500/508 PN 16: DN 65/76.1 - DN 600/609.6	-
Slip-on flanges according to EN with reduced thickness	-	PN 10: DN 15/21.3 - DN 300/323.9	PN 10: DN 15/21.3 - DN 600/608	-
Slip-on flanges according to ASTM	-	-	-	-
Lap-joint flanges according to EN	-	PN 10: DN 200/219.1 - DN 500/508 PN 16: DN 50/60.3 - DN 150/168.3 PN 40: DN 15/21.3 - DN 40/48.3	PN 10: DN 200/219.1 - DN 600/609.6 PN 16: DN 50/60.3 - DN 250/273 PN 40: DN 15/21.3 - DN 40/48.3	-
Lap-joint flanges according to DIN	-	PN 10: DN 10/17.2 - DN 250/273	PN 10: DN 10/17.2 - DN 250/273	PN 10: DN 15/21.3 - DN 300/323.9
Lap-joint flanges according to DIN with reduced thickness	-	-	PN 10: DN 50/60.3 - DN 600/609.6	-
Lap-joint flanges according to EN with reduced thickness	-	PN 10: DN 15/21.3 - DN 300/323.9	PN 10: DN 15/21.3 - DN 300/323.9	-
Lap-joint flanges according to ASTM	-	-	-	-
Blind flanges according to EN	PN 16: DN 50 - DN 200 PN 40: DN 15 - DN 40	PN 10: DN 200 - DN 300 PN 16: DN 50 - DN 400 PN 40: DN 15 - DN 50	PN 10: DN 200 - DN 500 PN 16: DN 50 - DN 300 PN 40: DN 10 - DN 200	-
Blind flanges according to DIN	PN 16: DN 15 - DN 40	PN 16: DN 15 - DN 40	PN 16: DN 10 - DN 40	PN 10: DN 15 - DN 300
Blind flanges according to DIN with reduced thickness	-	-	PN 10: DN 200 - DN 600 PN 16: DN 100 - DN 150	-
Blind flanges according to EN with reduced thickness	-	PN 10: DN 25 - DN 300	PN 10: DN 20 - DN 300	-
Blind flanges according to ASTM	-	-	-	-
Socket-weld flanges according to ASTM	-	-	-	-
Pressed flanges	-	-	-	-

BUTT WELDED FITTINGS

grade	1.4301/1.4307	1.4401/1.4404	1.4432	1.4462	1.4539	1.4541	1.4571
AISI/UNS*)	304/304 L	316/316 L	316 L	S 31803	904 L	321	316 Ti
Elbow 90° seamless according to EN	-	-	-	21.34 x 2.11 - 219.10 x 8.18	21.34 x 2.11 - 219.10 x 8.18	12.0 x 1.5 - 168.3 x 4.5	12.0 x 1.5 - 168.3 x 4.5
Elbow 90° seamless according to ASTM	21.34 x 2.11 - 323.85 x 12.7	21.34 x 2.11 - 323.85 x 12.7	-	-	-	-	-
Elbow 90° welded according to EN	12.0 x 1.5 - 812.8 x 4.0	12.0 x 1.5 - 812.8 x 4.0	26.9 x 2.0 - 608.0 x 4.0	-	76.1 x 2.9 - 323.9 x 4.0	17.2 x 1.6 - 406.4 x 3.0	17.2 x 1.6 - 609.6 x 4.0
Elbow 90° welded according to ASTM	21.34 x 2.11 - 609.6 x 9.53	21.34 x 2.11 - 609.6 x 9.53	-	-	-	-	-
Elbow 180° seamless according to ASTM	21.34 x 2.11 - 114.3 x 3.05	21.34 x 2.11 - 114.3 x 3.05	-	-	-	-	-
Elbow 45° seamless according to ASTM	21.34 x 2.11 - 219.08 x 8.18	21.34 x 2.11 - 219.08 x 8.18	-	-	-	-	-
Elbow 45° welded according to ASTM	168.28 x 3.4 - 406.4 x 9.53	168.28 x 3.4 - 406.4 x 9.53	-	-	-	-	-
Tee seamless according to EN	-	-	-	21.34 x 2.11 - 219.1 x 8.18	21.34 x 2.11 - 219.1 x 8.18	21.3 x 2.0 - 60.3 x 2.0	17.2 x 2.3 - 114.3 x 3.6
Tee welded according to EN	21.3 x 2.0 - 219.1 x 3.0	13.5 x 1.6 - 219.1 x 3.0	21.3 x 2.0 - 156.0 x 3.0	-	-	21.3 x 2.0 - 219.1 x 3.0	21.3 x 2.0 - 323.9 x 3.0
Tee welded according to EN with short branch	21.3 x 2.0 - 609.6 x 2.9	17.2 x 1.6 - 609.6 x 2.9	-	-	-	-	-
Tee seamless according to ASTM	21.34 x 2.11 - 323.85 x 12.7	21.34 x 2.11 - 323.85 x 12.7	-	-	-	-	-
Tee welded according to ASTM	21.34 x 2.11 - 406.4 x 9.53	21.34 x 2.11 - 609.6 x 9.53	-	-	-	-	-
Reducing tee seamless according to EN	-	-	-	-	-	33.7 x 2.6 / 21.3 x 2.0 - 60.3 x 2.9 / 21.3 x 2.0	33.7 x 2.6 / 21.3 x 2.0 - 168.3 x 4.5 / 88.8 x 3.2
Reducing tee seamless according to ASTM	26.67 x 2.11 / 21.34 x 2.11 - 323.85 x 9.53 / 273.05 x 9.27	26.67 x 2.11 / 21.34 x 2.11 - 323.85 x 9.53 / 273.05 x 9.27	-	-	-	-	-
Reducing tee welded according to EN	21.3 x 2.0 / 17.2 x 2.0 - 219.1 x 3.0 / 168.3 x 3.0	-	-	-	-	48.3 x 2.0 / 21.3 x 1.6 - 60.3 x 2.0 / 48.3 x 2.0	26.9 x 2.0 / 21.3 x 2.0 - 168.3 x 2.6 / 114.3 x 2.6
Reducing tee welded according to ASTM	-	355.6 x 4.78 / 273.05 x 4.19 - 406.4 x 9.53 / 355.6 x 9.53	-	-	-	-	-
Reducer concentric seamless according to EN	-	-	-	-	-	26.9 x 1.6 / 21.3 x 1.6 - 114.3 x 2.6 / 76.1 x 2.3	21.3 x 2.0 / 17.2 x 1.8 - 219.1 x 6.3 / 137.9 x 4.0
Reducer excentric seamless according to EN	-	-	-	-	-	-	88.9 x 3.2 / 76.1 x 2.9 - 114.3 x 3.6 / 76.1 x 2.9
Reducer concentric welded according to EN	17.2 x 2.0 / 13.5 x 2.0 - 609.6 x 4.0 / 508.0 x 4.0	21.3 x 2.0 / 13.5 x 2.0 - 609.6 x 3.0 / 508.0 x 3.0	-	-	-	26.9 x 1.6 / 17.2 x 1.6 - 273.0 x 3.0 / 219.1 x 3.0	21.3 x 2.0 / 13.5 x 1.8 - 323.9 x 3.0 / 273.0 x 3.0
Reducer excentric welded according to EN	-	21.3 x 2.0 / 17.2 x 2.0 - 323.9 x 3.0 / 273.0 x 3.0	-	-	-	-	33.7 x 2.0 / 21.3 x 2.0 - 219.1 x 2.9 / 168.3 x 2.9
Reducer concentric seamless according to ASTM	26.67 x 2.87 / 17.14 x 2.31 - 323.85 x 17.48 / 273.05 x 9.27	26.67 x 2.87 / 17.14 x 2.31 - 323.85 x 17.48 / 273.05 x 9.27	-	33.4 x 3.38 / 21.34 x 2.77 - 219.1 x 8.18 / 168.26 x 7.11	33.4 x 3.38 / 21.34 x 2.77 - 219.1 x 8.18 / 168.26 x 7.11	-	-
Reducer excentric seamless according to ASTM	26.67 x 2.11 / 21.33 x 2.11 - 323.85 x 10.31 / 168.3 x 7.11	26.67 x 2.11 / 21.33 x 2.11 - 323.85 x 9.53 / 273.05 x 9.27	-	-	-	-	-
Reducer concentric welded according to ASTM	26.67 x 2.11 / 21.33 x 2.11 - 406.4 x 9.53 / 355.6 x 9.53	26.67 x 2.11 / 21.33 x 2.11 - 609.6 x 9.53 / 508.0 x 9.53	-	-	-	-	-
Reducer excentric welded according to ASTM	219.08 x 3.76 / 114.3 x 3.05 - 323.85 x 9.53 / 273.05 x 9.27	219.08 x 3.76 / 114.3 x 3.05 - 323.85 x 9.53 / 273.05 x 9.27	-	-	-	-	-
Cap according to EN	17.2 x 2.0 - 812.8 x 4.0	17.2 x 2.0 - 609.6 x 4.0	-	-	-	-	-
Cap according to DIN	-	-	-	-	-	-	21.3 x 2.0 - 508.0 x 4.0
Cap according to ASTM	21.34 x 2.11 - 609.6 x 9.53	21.34 x 2.11 - 609.6 x 9.53	-	-	-	-	-
Stub-end according to ASTM	21.34 x 2.11 - 406.4 x 4.78	21.34 x 2.11 - 406.4 x 4.78	-	-	-	-	-
Welding collar similar to DIN	17.2 x 2.0 - 812.8 x 4.0	17.2 x 2.0 - 609.6 x 4.0	-	-	26.9 x 3.0 - 323.9 x 3.0	17.2 x 1.8 - 508.0 x 4.0	17.2 x 2.0 - 609.6 x 4.0

THREADED FITTINGS

grade	1.4301/1.4307/1.4308	1.4404/1.4408	1.4571
AISI/UNS*)	304/304 L	316/316 L	316 Ti
Socket	1/8" - 4"	1/8" - 4"	1/8" - 4"
Half socket	1/4" - 2"	1/8" - 4"	1/4" - 2"
ISO 7-1R (from pipe)	Welding nipple	1/4" - 2"	1/8" - 4"
	Barrel nipple	1/4" - 2"	1/8" - 6"
	Parallel nipple	-	1/8" - 2"
	Bend 90° m/m	-	1/8" - 2"
	Hose nipple hose/m	-	1/8" - 4"
	Hose nipple hose/bw	-	3/8" - 4"
	Equal tee	1/4" - 2"	1/8" - 4"
	Reducing tee f/f/f	-	3/8" x 1/8" - 2" x 1 1/2"
	Cross	-	1/4" - 2"
	Y-tee	-	1/8" - 4"
Elbow with bar f/f	1/2" x 45° - 1/2" x 90°	-	
Elbow 45° f/f	1/4" - 2"	1/8" - 4"	
Elbow 90° f/f	1/4" - 2"	1/8" - 4"	
Reducing elbow 90° f/f	-	3/8" x 1/4" - 2" x 1 1/2"	
Street elbow 45° m/f	1/8" - 4"	1/8" - 4"	
Street elbow 90° m/f	1/4" - 2"	1/8" - 2"	
Coupling	1/8" - 2"	1/8" - 2"	
Reducing coupling f/f	-	1/4" x 1/8" - 4" x 3"	
EN-ISO 4144	Half coupling	1/8" - 2"	1/8" - 2"
	Double nipple	-	-
	Welding nipple	-	-
	Hexagon coupling	-	1/4" - 1/2"
	Hexagon nipple	1/4" - 2"	1/8" - 4"
	Hexagon reducing nipple m/m	1/4" x 1/8" - 2" x 1 1/2"	1/4" x 1/8" - 4" x 3"
	Hexagon hose nipple f	1/8" - 2"	1/4" - 2"
	Hose nipple m	-	1/8" - 4"
	Hexagon head plug tapered conical	3/8" - 2"	1/8" - 4"
	Hexagon cap	1/4" - 2"	1/8" - 4"
	Hexagon head	-	1/8" - 3"
	Hexagon nut	-	1/8" - 4"
	Hexagon bushing m/f	1/4" x 1/8" - 2" x 1 1/2"	1/4" x 1/8" - 4" x 3"
	Negative hexagon bushing f/m	-	1/4" x 1/8" - 2" x 1 1/2"

grade	1.4301/1.4307/1.4308	1.4404/1.4408
AISI/UNS*)	304/304 L	316/316 L
EN-ISO 4144	Adaptor M NPT/ F BSP	-
	Adaptor M BSP/ F NPT	-
	Square head plug	-
	Round cap	-
	Union conical f/f	1/4" - 2"
	Union flat seat f/f	-
	Union conical f/m	1/4" - 2"
	Union flat seat f/m	-
	Union conical m/m	-
	Union flat seat m/m	-
	Union conical bw/bw	-
	Union flat seat bw/bw	-
	Union conical bw/f	-
	Union flat seat bw/f	-
	Union conical bw/m	-
	Union flat seat bw/m	-
	Union conical hose/m	-
	Elbow union conical f/f	-
	Elbow union flat f/f	-
	Elbow union conical f/m	-
Elbow union flat f/m	-	
Elbow union flat f/bw	-	
Quick coupling - a adapter f	-	
Quick coupling - b coupler m	-	
Quick coupling - c coupler hose shank	-	
Quick coupling - d coupler f	-	
Quick coupling - e adapter hose shank	-	
Quick coupling - f adapter m	-	
Quick coupling - dp dustplug	-	
Quick coupling - dc dustcap	-	



HIGH-PRESSURE FITTINGS NPT AND SW

grade	1.4301/1.4307	1.4401/1.4404
AISI/UNS*)	304/304 L	316/316 L
Full coupling (NPT)	1/8" - 2"	1/8" - 2"
Half coupling (NPT)	1/8" - 2"	1/8" - 2"
Reducing coupling (NPT)	1/2" x 1/4" - 2" x 1 1/2"	3/8" x 1/4" - 2" x 1 1/2"
Elbow 90° f/f (NPT)	1/4" - 2"	1/8" - 2"
Elbow 90° f/m (NPT)	1/4" - 3/8"	1/4" - 1 1/2"
Elbow 45° f/f (NPT)	-	1/8" - 2"
Tee (NPT)	1/4" - 2"	1/8" - 2"
Pipe nipple T.O.E. (NPT)	1/8" - 2"	1/4" - 2"
Pipe nipple T.B.E. (NPT)	1/4" - 2"	1/8" - 2"
Hexagon nipple (NPT)	1/4" - 2"	1/8" - 2"
Hexagon reducing nipple (NPT)	1/2" x 1/4" - 2" x 1 1/4"	1/4" x 1/8" - 2" x 1 1/2"
Hexagon head plug (NPT)	1/8" - 2"	1/8" - 2"
Hexagon bushing f/m (NPT)	3/8" x 1/4" - 2" x 1 1/2"	3/8" x 1/8" - 2" x 1 1/2"
Hexagon cap (NPT)	1/4" - 2"	1/4" - 2"
Round cap (NPT)	1/4" - 2"	1/8" - 2"
Union (NPT)	1/4" - 2"	1/8" - 2"
Union conical m/f (NPT)	-	1/4" - 2"
Full coupling (SW)	3/8" - 2"	1/4" - 2"
Half coupling (SW)	3/8" - 2"	1/2" - 1 1/2"
Reducing coupling (SW)	1/2" x 3/8" - 2" x 1 1/2"	3/8" x 1/4" - 2" x 1 1/2"
Elbow 90° (SW)	1/4" - 2"	1/4" - 2"
Elbow 45° (SW)	1/4" - 2"	1/4" - 2"
Tee (SW)	1/4" - 2"	1/4" - 2"
Round cap (SW)	1/4" - 1 1/2"	1/4" - 1 1/2"
Union (SW)	1/4" - 2"	1/4" - 2"



DAIRY FITTINGS

grade	1.4307	1.4404
AISI/UNS*)	304 L	316 L
Elbow welded	18.0 x 1.5 - 104.0 x 2.0	18.0 x 1.5 - 104.0 x 2.0
T-piece welded	25.4 x 1.25 - 104.0 x 2.0	18.0 x 1.5 - 104.0 x 2.0
Concentric reducer	22.0 x 18.0 x 1.5 - 104.0 x 85.0 x 2.0	22.0 x 18.0 x 1.5 - 104.0 x 85.0 x 2.0
Male part	DN 10 - 150	DN 10 - 150
Liner	DN 15 - 125	DN 15 - 150
Nut	DN 10 - 150	DN 10 - 125
Gasket*	-	-
Blind nut	DN 15 - 100	DN 15 - 100
Blind nut complete	DN 20 - 100	-
Sealing disc*	-	-
Male part (INCH)	1" - 4"	1" - 4"
Liner (INCH)	1" - 4"	1 1/2" - 4"
Male part (ISO)	DN 10 - 100	DN 15 - 100
Liner (ISO)	DN 15 - 125	DN 15 - 100
Butterfly valve	DN 20 - 100	-

* Gasket and sealing disc available in plastic version.
Please ask your sales team!



NOXPRESS

grade	1.4401/1.4404
AISI/UNS*)	316/316 L
Tubes	15.0 x 1.0 - 108.0 x 2.0
Equal tee	15 - 108
Reducing tee	22 x 15 - 108 x 76.1
Branch tee female BSP outlet	15 x 1/2" - 108 x 3/4"
Elbow 45° f/f	15 - 108
Elbow 45° m/f	15 - 88.9
Elbow 90° f/f	15 - 108
Elbow 90° m/f	15 - 88.9
Elbow adaptor 90° with female thread	15 - 28
Elbow adaptor 90° with male thread	15 - 54
Coupling	15 - 108
Slip coupling	15 - 76.1
Valve connector	15 - 42
Straight male union connector	15 - 54
Straight female union connector	15 - 54
Stop end	15 - 54
Wall plate elbow 90° with female thread	15 x 1/2" - 22 x 3/4"
Female adaptor	15 x 1/2" - 54 x 2"
Male adaptor	15 x 1/2" - 76.1 x 2 1/2"
Reducer	18 x 15 - 108 x 76.1
Adaptor flange PN16	15 - 108
FKM ring green	15 - 88.9

CUTTING RING FITTINGS

grade	1.4571
AISI/UNS*)	316 Ti
Straight union	6 - 42
Bulkhead union	6 - 30
BSP threaded female straight connector	6 - 42
Straight reducing union	8 - 35
BSP threaded straight male connector	6 - 42
Union elbow	6 - 42
Union tee	6 - 42
Male elbow	6 - 25
Cap union	6 - 42
Cutting ring	6 - 30
Reinforcing ring	4 - 25
Nut	6 - 22

VALVES

grade	CF8M/304/316
AISI/UNS*)	
1 piece - reduced port ball valve screwed end	1/4" - 2"
2 piece - full port ball valve screwed end	1/4" - 4"
2 piece - full port ball valve screwed end 2000 PSI	1/4" - 2"
3 way ball valve, reduced bore	1/4" - 2"
2 piece ball valve, full bore	1/4" - 2"
3 piece ball valve, full bore	1/4" - 4"
2 piece flanged ball valve, full bore	1/2" - 4"
Gate valve, full bore	DN 15 - 50
Swing check valve, full bore	1/4" - 3"
YS-Strainer, full bore	1/4" - 2"
Y-Globe valve, full bore	1/2" - 2"
Piston check valve, full bore	1/4" - 4"
Needle valve	1/4" - 1"

CLIPS

grade	1.4301	1.4401
AISI/UNS*)	304	316
Saddle type	20.0 - 323.9	12.0 - 323.9
U-Clip	-	12.0 - 323.9
Pipe Clip Type R-171 reinforced	-	60.3 - 323.9
Pipe Clip Type R-171 smooth finish	-	21.3 - 355.6
Pipe Clip according DIN3567 heavy duty	-	21.3 - 219.1



STAPPERT UK LTD.

Head Office

Wentworth Way | Tankersley
Barnsley S75 3DH
GREAT BRITAIN
T +44 121 740 0175
F +44 121 326 3109
uk@stappert.biz

uk.stappert.biz

STAPPERT INTERNATIONAL

STAPPERT Česká republika spol. s r.o.

Otmarov 57
66457 Měnín
CZECH REPUBLIC
T +420 544 423 911
F +420 547 230 363
ceskarepublika@stappert.biz
ceskarepublika.stappert.biz

STAPPERT France S.A.S.

Rue Jacques Henry
02200 Soissons
FRANCE
T +33 3 23 73 50 00
F +33 3 23 73 50 10
france@stappert.biz
france.stappert.biz

STAPPERT Noxon BV

Gerstdijk 4
5704 RG Helmond
THE NETHERLANDS
T +31 492 582111
F +31 492 538970
noxon@stappert.biz
noxon.stappert.biz

STAPPERT Sverige AB

Gamla Slätthultsvägen 3
34334 Älmhult
SWEDEN
T +46 476 48550
F +46 476 48560
sverige@stappert.biz
sverige.stappert.biz

STAPPERT Deutschland GmbH

Willstätterstraße 13
40549 Düsseldorf
GERMANY
T +49 211 5279-0
F +49 211 5279-177
deutschland@stappert.biz
deutschland.stappert.biz

STAPPERT Intramet SA

Rue du Parc Industriel, 5
4480 Engis
BELGIUM
T +32 4 275 82 11
F +32 4 275 82 90
intramet@stappert.biz
intramet.stappert.biz

STAPPERT Polska Sp. z o.o.

ul. A. Gaudiego 18
44-109 Gliwice
POLAND
T +48 32 3447300
F +48 32 3447375
polska@stappert.biz
polska.stappert.biz

STAPPERT UK Ltd.

Wentworth Way | Tankersley
Barnsley S75 3DH
GREAT BRITAIN
T +44 121 740 0175
F +44 121 326 3109
uk@stappert.biz
uk.stappert.biz

STAPPERT Fleischmann GmbH

Gewerbepark B17/1/Objekt 1
2524 Teesdorf
AUSTRIA
T +43 2253 90313-0
F +43 2253 90313-600
fleischmann@stappert.biz
fleischmann.stappert.biz

STAPPERT Magyarország Kft.

Rétifarkas utca 1.
1172 Budapest
HUNGARY
T +36 1 4342424
F +36 1 4342442
magyarorszag@stappert.biz
magyarorszag.stappert.biz

STAPPERT Slovensko a.s.

Šimonovská 37
97271 Nováky
SLOVAKIA
T +421 46 51834-20
F +421 46 51834-30
slovensko@stappert.biz
slovensko.stappert.biz

group.stappert.biz



STAPPERT